

Scaled data based on original data using  
LM-79-08 Approved Method: Electrical and Photometric Measurements of Solid-  
State Lighting Products

Test Report Prepared for  
Cooper Lighting Solutions  
(formerly Eaton)

Brand: INVUE

Report Number: P151670

Luminaire Tested: **VWM-E05-LED-E1-SL4-HSS**

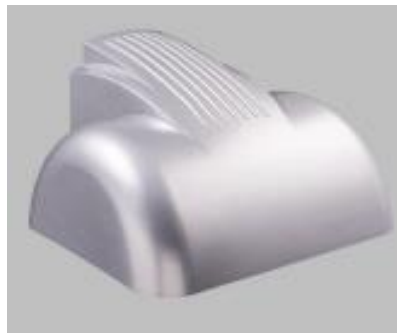
Issue Date: 03/03/2020

**Test Information**

Test Method: LM-79-08  
Report Number: P151670  
REPORT IS SCALED FROM IESNA LM-79-08 TEST DATA (P33728)  
Test Lab: INNOVATION CENTER-P3  
Issue Date: 03/03/2020  
Manufacturer: COOPER LIGHTING SOLUTIONS (FORMERLY EATON)  
Product Line: INVUE  
Catalog Number: VWM-E05-LED-E1-SL4-HSS  
Description: VISION WALL MEDIUM LED LUMINAIRE  
(5) LIGHTBARS WITH AccuLED OPTICS - TYPE 4 W/ SPILL LIGHT CONTROL AND HOUSE SIDE SHIELD  
Light Source: (105) 4000K CCT, 70 CRI LEDs  
Ballast/Driver: -

**Summary**

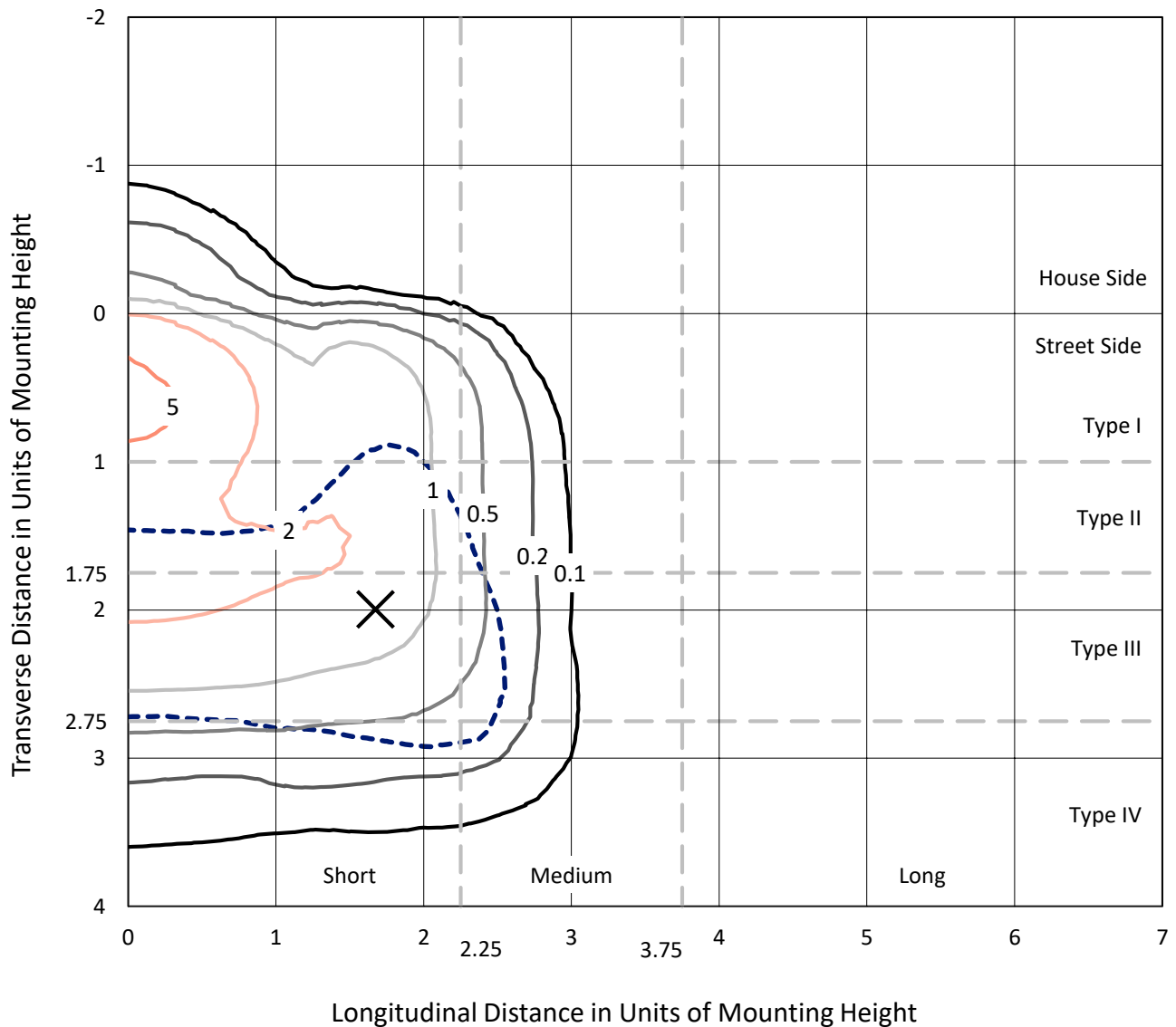
Lumens per Lamp: N/A  
Luminaire Lumens: 10174 lumens  
Efficiency: N/A  
Efficacy: 79.9 lumens/watt  
Luminous Opening: Rectangular (W 0.83' x L: 1' x H: 0')  
IES Classification: Type IV - Short - Semi-Cutoff  
BUG Rating: B1 - U0 - G3  
  
Input Watts (W): 127.3  
Input Voltage (V): NR  
Input Current (Ain): NR  
Voltage Rise (V): NR  
Power Factor: NR  
Total Harmonic Distortion (THDi): NR  
Frequency (hertz): 60  
Stabilization Time: NR  
Operation Time: NR  
Ambient Temperature (°C): NR  
Test Distance: 25 FT



REPORT NUMBER: P151670  
 CATALOG NUMBER: VWM-E05-LED-E1-SL4-HSS

### Iso-Footcandle Lines of Horizontal Illumination

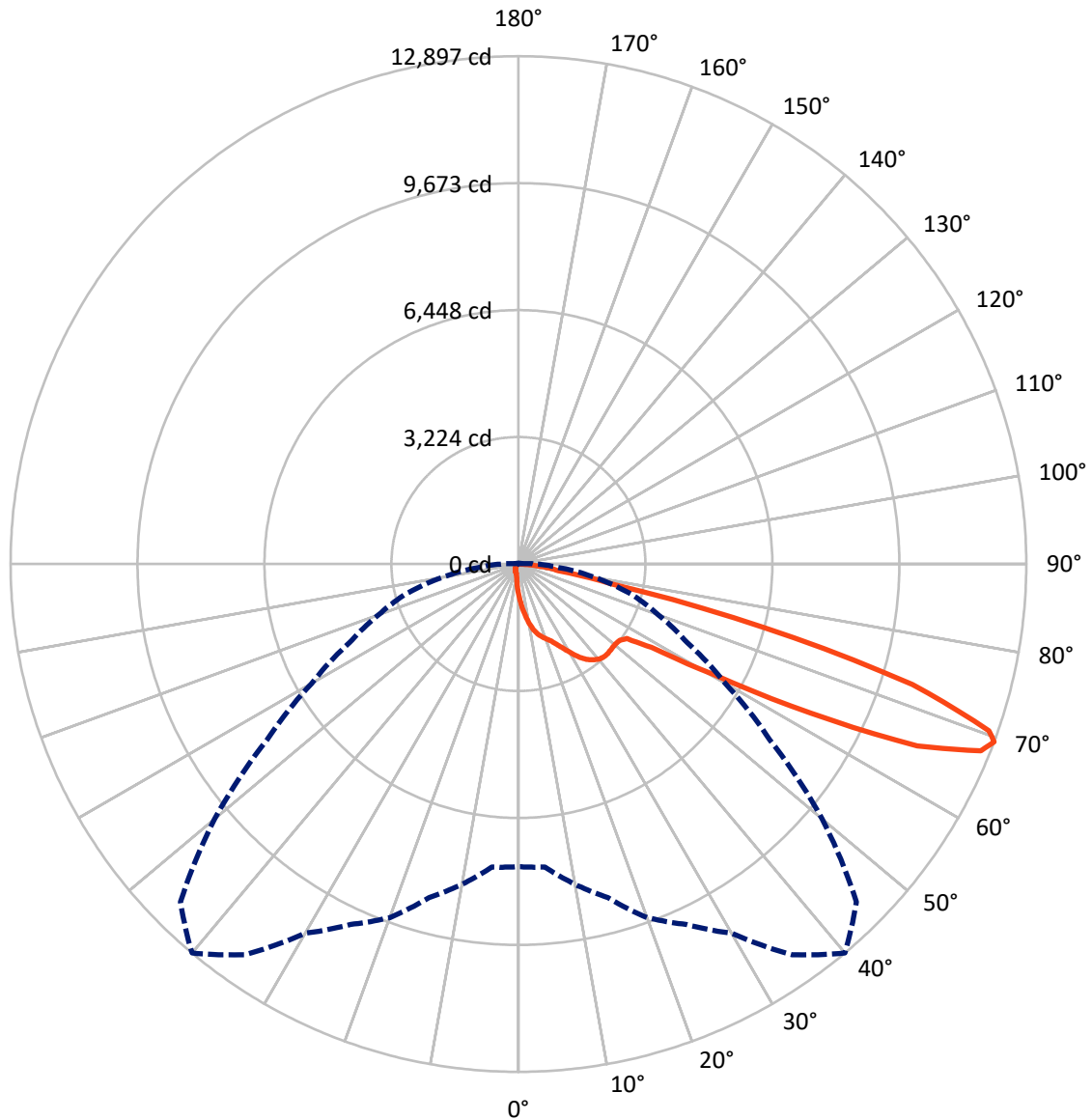
✕ Max cd  
 - - - 1/2 Max cd



Based on 20 foot mounting height. Maximum calculated value = 5.7 fc  
 Type IV - Short - Semi-Cutoff

REPORT NUMBER: P151670  
CATALOG NUMBER: VWM-E05-LED-E1-SL4-HSS

### Luminous Intensity Polar Plot



— Vertical Plane Through 40-Deg Lateral    - - - Horizontal Cone Through 69-Deg Vertical

REPORT NUMBER: P151670

CATALOG NUMBER: VWM-E05-LED-E1-SL4-HSS

**FLUX DISTRIBUTION:**

		Downward	Upward	Total
<b>House Side</b>	Lumens	303.0	0.0	303.0
	% Fixture	3.0	0.0	3.0
<b>Street Side</b>	Lumens	9871.1	0.0	9871.1
	% Fixture	97.0	0.0	97.0
<b>Total</b>	Lumens	10174.0	0.0	10174.0
	% Fixture	100.0	0.0	100.0

**Coefficient of Utilization**

**ZONAL LUMENS:**

Zone	Lumens	% Fixture
0°-10°	79.0	0.8
10°-20°	272.3	2.7
20°-30°	521.1	5.1
30°-40°	866.7	8.5
40°-50°	1172.7	11.5
50°-60°	1834.0	18.0
60°-70°	3770.7	37.1
70°-80°	1517.3	14.9
80°-90°	140.3	1.4
90°-100°	0.0	0.0
100°-110°	0.0	0.0
110°-120°	0.0	0.0
120°-130°	0.0	0.0
130°-140°	0.0	0.0
140°-150°	0.0	0.0
150°-160°	0.0	0.0
160°-170°	0.0	0.0
170°-180°	0.0	0.0
0°-90°	10174.0	100.0
0°-180°	10174.0	100.0



REPORT NUMBER: P151670

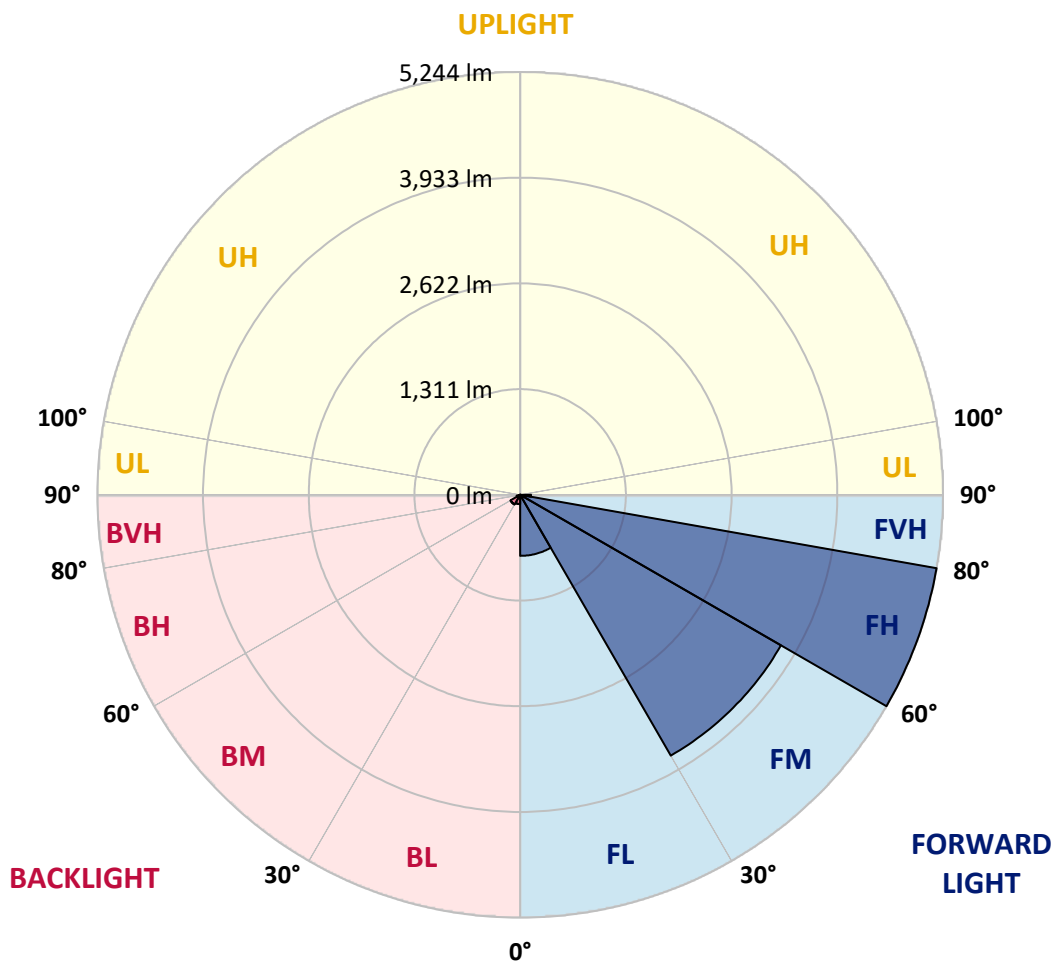
CATALOG NUMBER: VWM-E05-LED-E1-SL4-HSS

**LUMINAIRE CLASSIFICATION SYSTEM LUMEN TABLE AND BUG RATING:**

Zone	Lumens	% Fixture	Zone Rating/Lumen Limit		
			B	U	G
FL (0°-30°)	757.1	7.4			
FM (30°-60°)	3735.0	36.7			
FH (60°-80°)	5243.7	51.5			G3/7500
FVH (80°-90°)	135.1	1.3			G2/225
BL (0°-30°)	115.2	1.1	B1/500		
BM (30°-60°)	138.3	1.4	B0/220		
BH (60°-80°)	44.2	0.4	B0/110		G0/110
BVH (80°-90°)	5.2	0.1			G0/10
UL (90°-100°)	0.0	0.0		U0/0	
UH (100°-180°)	0.0	0.0		U0/0	

**BUG Rating: B1-U0-G3**

Type IV Short





REPORT NUMBER: P151670

CATALOG NUMBER: VWM-E05-LED-E1-SL4-HSS

**CANDELA DISTRIBUTION (FULL):**

	0°	5°	10°	15°	20°	25°	30°	35°	40°	45°	50°
0°	768.3	768.3	768.3	768.3	768.3	768.3	768.3	768.3	768.3	768.3	768.3
2.5°	1025.0	1013.3	1000.0	1000.0	983.3	983.3	973.3	946.7	943.3	928.3	913.3
5°	1308.3	1298.3	1281.7	1266.7	1253.3	1230.0	1213.3	1181.7	1146.7	1113.3	1083.3
7.5°	1585.0	1580.0	1550.0	1545.0	1523.3	1485.0	1451.7	1405.0	1345.0	1298.3	1243.3
10°	1841.7	1830.0	1823.3	1795.0	1763.3	1721.7	1670.0	1613.3	1543.3	1470.0	1391.7
12.5°	2045.0	2038.3	2008.3	1996.7	1963.3	1921.7	1856.7	1783.3	1713.3	1618.3	1526.7
15°	2196.7	2185.0	2165.0	2146.7	2106.7	2070.0	2010.0	1930.0	1845.0	1741.7	1631.7
17.5°	2323.3	2301.7	2296.7	2268.3	2226.7	2183.3	2116.7	2043.3	1943.3	1840.0	1720.0
20°	2493.3	2463.3	2453.3	2411.7	2363.3	2303.3	2226.7	2135.0	2030.0	1916.7	1793.3
22.5°	2693.3	2671.7	2650.0	2613.3	2551.7	2466.7	2355.0	2255.0	2121.7	1996.7	1863.3
25°	2976.7	2958.3	2923.3	2873.3	2796.7	2695.0	2560.0	2413.3	2256.7	2096.7	1940.0
27.5°	3251.7	3235.0	3210.0	3171.7	3085.0	2973.3	2806.7	2620.0	2421.7	2228.3	2055.0
30°	3510.0	3495.0	3470.0	3431.7	3355.0	3245.0	3056.7	2856.7	2610.0	2385.0	2176.7
32.5°	3788.3	3783.3	3755.0	3700.0	3633.3	3485.0	3280.0	3065.0	2815.0	2555.0	2311.7
35°	4103.3	4065.0	4038.3	3983.3	3870.0	3711.7	3471.7	3236.7	2973.3	2706.7	2435.0
37.5°	4370.0	4333.3	4300.0	4230.0	4091.7	3890.0	3618.3	3360.0	3088.3	2816.7	2540.0
40°	4565.0	4546.7	4506.7	4415.0	4260.0	4020.0	3726.7	3445.0	3171.7	2898.3	2625.0
42.5°	4710.0	4681.7	4636.7	4541.7	4358.3	4085.0	3770.0	3480.0	3210.0	2948.3	2680.0
45°	4763.3	4740.0	4698.3	4595.0	4396.7	4103.3	3768.3	3470.0	3211.7	2963.3	2716.7
47.5°	4731.7	4708.3	4671.7	4575.0	4380.0	4081.7	3738.3	3441.7	3195.0	2968.3	2750.0
50°	4626.7	4613.3	4585.0	4503.3	4328.3	4040.0	3711.7	3426.7	3191.7	2993.3	2796.7
52.5°	4616.7	4608.3	4573.3	4491.7	4313.3	4026.7	3708.3	3435.0	3220.0	3025.0	2830.0
55°	5641.7	5523.3	5258.3	5033.3	4663.3	4223.3	3876.7	3570.0	3340.0	3150.0	3013.3
57.5°	8018.3	7841.7	7493.3	7065.0	6215.0	5380.0	4711.7	4228.3	3990.0	3903.3	3955.0
60°	9131.7	9100.0	9045.0	8841.7	8406.7	7688.3	6888.3	6023.3	5676.7	5646.7	5751.7
62.5°	9660.0	9640.0	9656.7	9631.7	9496.7	9286.7	9056.7	8683.3	8340.0	8118.3	7648.3
65°	9903.3	9916.7	10011.7	10086.7	10103.3	10158.3	10326.7	10791.7	11131.7	10560.0	9255.0
67.5°	9285.0	9363.3	9581.7	9855.0	10175.0	10485.0	10985.0	11965.0	12663.3	11991.7	10138.3
69°	7686.7	7725.0	8258.3	8773.3	9555.0	10101.7	10826.7	12111.7	12896.7	12138.3	10068.3
70°	6051.7	6086.7	6658.3	7358.3	8680.0	9383.3	10331.7	11863.3	12678.3	11943.3	9708.3
72.5°	2730.0	2680.0	2881.7	3256.7	4693.3	5810.0	7468.3	9611.7	10460.0	9568.3	7263.3
75°	1906.7	1885.0	1906.7	1908.3	2131.7	2750.0	3470.0	5210.0	6443.3	5560.0	3470.0
77.5°	1476.7	1461.7	1446.7	1430.0	1456.7	1631.7	1701.7	1848.3	2400.0	2270.0	1323.3
80°	1168.3	1155.0	1191.7	1180.0	1180.0	1200.0	1186.7	1131.7	1028.3	953.3	853.3
82.5°	543.3	546.7	546.7	593.3	715.0	835.0	873.3	818.3	726.7	618.3	498.3
85°	51.7	58.3	98.3	151.7	301.7	340.0	341.7	283.3	283.3	223.3	180.0
87.5°	0.0	1.7	1.7	1.7	15.0	41.7	35.0	10.0	5.0	5.0	8.3
90°	0.0	0.0	0.0	0.0	0.0	0.0	0.0	0.0	0.0	0.0	0.0



REPORT NUMBER: P151670

CATALOG NUMBER: VWM-E05-LED-E1-SL4-HSS

**CANDELA DISTRIBUTION (continued):**

	55°	60°	65°	70°	75°	80°	85°	90°	95°	100°	105°
0°	768.3	768.3	768.3	768.3	768.3	768.3	768.3	768.3	768.3	768.3	768.3
2.5°	886.7	881.7	861.7	841.7	823.3	803.3	785.0	766.7	746.7	731.7	713.3
5°	1036.7	1000.0	958.3	918.3	878.3	836.7	793.3	755.0	715.0	678.3	643.3
7.5°	1188.3	1116.7	1060.0	988.3	923.3	858.3	798.3	736.7	680.0	626.7	576.7
10°	1316.7	1230.0	1141.7	1050.0	956.7	870.0	786.7	713.3	638.3	573.3	511.7
12.5°	1421.7	1311.7	1203.3	1088.3	983.3	873.3	770.0	681.7	593.3	520.0	456.7
15°	1516.7	1390.0	1260.0	1126.7	993.3	868.3	753.3	643.3	553.3	470.0	398.3
17.5°	1593.3	1448.3	1301.7	1151.7	1008.3	861.7	731.7	616.7	511.7	425.0	355.0
20°	1660.0	1508.3	1350.0	1181.7	1018.3	860.0	713.3	583.3	475.0	383.3	315.0
22.5°	1721.7	1570.0	1400.0	1220.0	1033.3	858.3	696.7	558.3	443.3	351.7	283.3
25°	1791.7	1631.7	1453.3	1260.0	1060.0	865.0	686.7	538.3	415.0	321.7	258.3
27.5°	1870.0	1701.7	1516.7	1310.0	1095.0	878.3	683.3	516.7	390.0	293.3	238.3
30°	1980.0	1785.0	1580.0	1360.0	1126.7	893.3	680.0	503.3	365.0	271.7	218.3
32.5°	2076.7	1866.7	1650.0	1411.7	1161.7	908.3	678.3	485.0	341.7	250.0	203.3
35°	2178.3	1941.7	1710.0	1461.7	1191.7	925.0	676.7	471.7	320.0	228.3	188.3
37.5°	2266.7	2005.0	1756.7	1505.0	1225.0	940.0	678.3	460.0	300.0	210.0	175.0
40°	2341.7	2070.0	1808.3	1545.0	1260.0	963.3	680.0	448.3	280.0	193.3	163.3
42.5°	2408.3	2131.7	1863.3	1590.0	1300.0	990.0	690.0	438.3	263.3	178.3	151.7
45°	2460.0	2188.3	1923.3	1653.3	1365.0	1033.3	708.3	431.7	246.7	165.0	141.7
47.5°	2513.3	2271.7	2025.0	1753.3	1460.0	1101.7	740.0	430.0	233.3	155.0	133.3
50°	2586.7	2355.0	2115.0	1855.0	1546.7	1171.7	778.3	431.7	216.7	145.0	125.0
52.5°	2640.0	2440.0	2231.7	2031.7	1753.3	1385.0	926.7	461.7	208.3	136.7	115.0
55°	2955.0	2920.0	2925.0	2958.3	2743.3	2356.7	1550.0	666.7	245.0	155.0	113.3
57.5°	4166.7	4290.0	4361.7	4360.0	4005.0	3321.7	2081.7	856.7	273.3	180.0	135.0
60°	5760.0	5666.7	5535.0	5210.0	4738.3	3791.7	2328.3	921.7	236.7	143.3	123.3
62.5°	7168.3	6621.7	6136.7	5610.0	4991.7	3955.0	2378.3	916.7	206.7	108.3	86.7
65°	8046.7	7063.3	6280.0	5620.0	4891.7	3818.3	2250.0	841.7	175.0	88.3	71.7
67.5°	8256.7	6825.0	5716.7	4875.0	4086.7	2971.7	1651.7	633.3	136.7	73.3	63.3
69°	7798.3	6066.7	4736.7	3781.7	2973.3	1971.7	1021.7	400.0	105.0	66.7	58.3
70°	7173.3	5276.7	3858.3	3035.0	2201.7	1385.0	715.0	281.7	85.0	61.7	53.3
72.5°	4615.0	2771.7	1896.7	1320.0	908.3	551.7	280.0	126.7	65.0	51.7	43.3
75°	1790.0	1025.0	743.3	565.0	441.7	306.7	170.0	81.7	55.0	43.3	33.3
77.5°	881.7	675.0	551.7	378.3	220.0	136.7	91.7	63.3	45.0	31.7	21.7
80°	696.7	463.3	276.7	171.7	130.0	98.3	70.0	51.7	33.3	20.0	15.0
82.5°	356.7	195.0	143.3	116.7	96.7	76.7	56.7	36.7	21.7	13.3	11.7
85°	111.7	81.7	73.3	71.7	66.7	55.0	40.0	23.3	13.3	8.3	8.3
87.5°	8.3	11.7	15.0	11.7	13.3	11.7	15.0	10.0	6.7	6.7	5.0
90°	0.0	0.0	0.0	0.0	0.0	0.0	0.0	0.0	0.0	0.0	0.0





REPORT NUMBER: P151670

CATALOG NUMBER: VWM-E05-LED-E1-SL4-HSS

**CANDELA DISTRIBUTION (continued):**

	110°	115°	120°	125°	130°	135°	140°	145°	150°	155°	160°
0°	768.3	768.3	768.3	768.3	768.3	768.3	768.3	768.3	768.3	768.3	768.3
2.5°	700.0	680.0	661.7	650.0	628.3	620.0	611.7	608.3	593.3	596.7	583.3
5°	611.7	576.7	550.0	523.3	498.3	480.0	465.0	446.7	431.7	425.0	411.7
7.5°	531.7	486.7	451.7	423.3	393.3	370.0	350.0	336.7	323.3	310.0	303.3
10°	461.7	413.3	373.3	345.0	316.7	296.7	281.7	271.7	263.3	258.3	256.7
12.5°	396.7	350.0	313.3	288.3	266.7	256.7	250.0	245.0	243.3	241.7	241.7
15°	346.7	300.0	271.7	253.3	243.3	238.3	236.7	233.3	230.0	228.3	228.3
17.5°	300.0	265.0	245.0	235.0	230.0	226.7	223.3	220.0	216.7	215.0	215.0
20°	268.3	240.0	230.0	223.3	218.3	215.0	210.0	206.7	205.0	203.3	201.7
22.5°	243.3	225.0	218.3	213.3	206.7	201.7	198.3	195.0	191.7	190.0	188.3
25°	225.0	213.3	208.3	201.7	195.0	190.0	185.0	180.0	176.7	175.0	171.7
27.5°	211.7	203.3	196.7	188.3	181.7	176.7	171.7	166.7	163.3	160.0	158.3
30°	200.0	191.7	183.3	176.7	168.3	163.3	156.7	151.7	150.0	146.7	143.3
32.5°	188.3	180.0	171.7	163.3	155.0	148.3	145.0	138.3	135.0	133.3	130.0
35°	175.0	166.7	156.7	150.0	141.7	135.0	130.0	125.0	121.7	118.3	116.7
37.5°	163.3	153.3	143.3	135.0	128.3	121.7	116.7	111.7	108.3	105.0	103.3
40°	150.0	140.0	130.0	121.7	115.0	110.0	105.0	100.0	96.7	95.0	95.0
42.5°	138.3	126.7	116.7	110.0	105.0	98.3	93.3	88.3	86.7	85.0	86.7
45°	126.7	115.0	106.7	100.0	95.0	88.3	83.3	80.0	78.3	80.0	81.7
47.5°	116.7	105.0	96.7	91.7	86.7	81.7	76.7	73.3	73.3	76.7	80.0
50°	106.7	95.0	88.3	85.0	80.0	75.0	68.3	66.7	68.3	71.7	75.0
52.5°	96.7	83.3	78.3	76.7	71.7	66.7	61.7	60.0	61.7	65.0	63.3
55°	86.7	73.3	71.7	70.0	65.0	58.3	53.3	53.3	53.3	51.7	48.3
57.5°	83.3	65.0	63.3	61.7	56.7	50.0	46.7	43.3	41.7	36.7	35.0
60°	86.7	58.3	58.3	55.0	50.0	43.3	38.3	33.3	30.0	26.7	26.7
62.5°	70.0	53.3	51.7	48.3	41.7	35.0	30.0	25.0	23.3	21.7	21.7
65°	56.7	48.3	45.0	40.0	35.0	28.3	23.3	20.0	18.3	18.3	20.0
67.5°	51.7	43.3	38.3	33.3	28.3	21.7	18.3	16.7	16.7	18.3	18.3
69°	48.3	40.0	35.0	30.0	25.0	20.0	16.7	16.7	16.7	16.7	18.3
70°	45.0	38.3	33.3	28.3	21.7	16.7	15.0	15.0	16.7	16.7	18.3
72.5°	35.0	30.0	28.3	23.3	16.7	15.0	13.3	15.0	15.0	16.7	16.7
75°	26.7	21.7	21.7	18.3	13.3	11.7	11.7	13.3	13.3	15.0	15.0
77.5°	18.3	15.0	15.0	13.3	11.7	10.0	10.0	11.7	13.3	13.3	15.0
80°	13.3	11.7	10.0	11.7	10.0	8.3	10.0	11.7	11.7	13.3	13.3
82.5°	10.0	10.0	10.0	10.0	8.3	8.3	10.0	10.0	11.7	13.3	13.3
85°	8.3	8.3	8.3	8.3	8.3	8.3	8.3	10.0	10.0	11.7	11.7
87.5°	5.0	5.0	5.0	6.7	6.7	8.3	8.3	8.3	8.3	10.0	10.0
90°	0.0	0.0	0.0	0.0	0.0	0.0	0.0	0.0	0.0	0.0	0.0



REPORT NUMBER: P151670

CATALOG NUMBER: VWM-E05-LED-E1-SL4-HSS

**CANDELA DISTRIBUTION (continued):**

	165°	170°	175°	180°
0°	768.3	768.3	768.3	768.3
2.5°	580.0	578.3	571.7	573.3
5°	406.7	396.7	403.3	401.7
7.5°	298.3	296.7	295.0	298.3
10°	255.0	255.0	253.3	255.0
12.5°	240.0	240.0	240.0	240.0
15°	228.3	228.3	226.7	226.7
17.5°	215.0	215.0	215.0	213.3
20°	201.7	200.0	200.0	200.0
22.5°	186.7	185.0	185.0	185.0
25°	171.7	170.0	170.0	170.0
27.5°	156.7	155.0	153.3	153.3
30°	141.7	140.0	138.3	138.3
32.5°	126.7	125.0	123.3	123.3
35°	113.3	113.3	111.7	110.0
37.5°	101.7	101.7	101.7	101.7
40°	93.3	95.0	95.0	95.0
42.5°	88.3	90.0	91.7	93.3
45°	85.0	88.3	90.0	90.0
47.5°	83.3	85.0	86.7	86.7
50°	76.7	75.0	75.0	75.0
52.5°	61.7	58.3	56.7	55.0
55°	45.0	43.3	40.0	40.0
57.5°	31.7	31.7	30.0	30.0
60°	25.0	25.0	23.3	25.0
62.5°	21.7	21.7	21.7	21.7
65°	20.0	20.0	20.0	20.0
67.5°	20.0	20.0	20.0	20.0
69°	18.3	18.3	18.3	18.3
70°	18.3	18.3	18.3	18.3
72.5°	16.7	16.7	16.7	16.7
75°	15.0	16.7	16.7	16.7
77.5°	15.0	15.0	15.0	15.0
80°	13.3	13.3	15.0	15.0
82.5°	13.3	13.3	13.3	13.3
85°	11.7	11.7	13.3	13.3
87.5°	10.0	10.0	11.7	11.7
90°	0.0	0.0	0.0	0.0

(END OF REPORT)